

Esther Hall is Guilford's *No. 1* Cheerleader at Last

Almost 30 years after leaving Guilford with a sociology degree, Esther Hall '74 has achieved a goal she had as a student. As the new president of the Alumni Association, she is finally the college's No. 1 cheerleader.

Hall leads a 30-member board that includes alumni from across the nation representing each of the last six decades. The board has a planning retreat each June, and it meets on Homecoming Weekend and early in the calendar year to plan activities for alumni. This year there is a special focus on promoting the college to prospective students.

"We have a great opportunity, together, to create opportunities for those who love the college to find ways to repay the investment made in us," she said. "In keeping with the energy crackling on campus after the arrival of President Kent Chabotar, the Alumni Association finds itself relevant in new ways.

"Who better than alumni to represent Guilford at college fairs? With alums scattered around the U.S., we are organizing regional councils to bring together people in their localities. Alumni matter in the life of Guilford College, and we need their involvement," Hall said.

A resident of Raleigh, N.C., and wife of 13th District U.S. Rep. Brad Miller, Hall has been involved in nonprofit work for 25 years. She is presently executive director of Arts Together, a Raleigh-based community school for the arts serving 2,700 students from two years of age to adults.

Contact the Alumni Association through the Office of Alumni Relations by calling 336-316-2321 or e-mailing alumni@guilford.edu.



Hall

LENNY COHEN

Promote Guilford

Would you be willing to promote Guilford College in your area to alumni and friends of the college as well as prospective students and their families?

The Office of Alumni Relations is seeking regional council members who will enhance communications and relationships between the college and these important constituents.

Council members:

- serve as a support and resource for the alumni board;
- assist in keeping alumni

by Joining the Regional Council in your Area

informed of regional activities and events of interest;

- host social gatherings for alumni, students, families or friends of the college;
- assist the college with special events conducted in your region;
- collect updated information about alumni and contact alumni relations;
- encourage alumni in your area to identify and contact potential student applicants;
- identify potential individual,

corporate or foundation contributors.

Guilford is seeking to build a strong and active alumni base, working in conjunction with the alumni board, and college departments including enrollment, athletics, career development, internships and community services, and the Center for Continuing Education.

If you are interested in serving on a regional council, contact Jonna Yarbrough by calling 336-316-2148 or e-mailing jyarbrou@guilford.edu.

Alumni Invited to Join Class Agents Program

The Offices of Advancement and Alumni Relations are seeking alumni to help increase alumni participation in the Guilford Fund by serving as class agents. As the program enters its second year, 43 alumni representing 31 class years are involved.

Class agents help the director of the fund solicit their classmates by lending their name and endorsement to direct mail and telephone campaigns.

Three agents are needed per class. Volunteers are still needed for the following classes: '02, '01, '00, '99, '89, '87, '86, '85, '83, '80, '79, '77, '76, '75,

'71, '70, '66, '64, '63, '61, '60, '59, '58, '57, '56, '55, '54, '52, '49, '47, '46, '45, '44 and '42.

Class agents who have signed up since the program was launched with 33 volunteers last summer: **Jim Crumpler '53, Arnold Leary '55, Fred Jones '55, Jerry Harrelson '72, Melissa Harrelson '72, Roger Dalton '73, Ann Martorelli '74 Burton, Maria Smith '89, Corissa J.S. Gold '90, Brennan Keene '91, Daryl Nash '95, Jeannette Dye '97.**

If you are interested in serving, contact Sally Lewis by calling 336-316-2855 or e-mailing slewis2@guilford.edu.

Reservations Being Accepted for Guilford College License Tags

The Office of Alumni Relations is taking reservations for personalized Guilford College license tags. Three hundred reservations are required for the North Carolina Department of Motor Vehicles to begin production.

The cost is \$25 per year in addition to the standard renewal fee for vehicle registration. Fifteen dollars of the addi-

tional fee will be designated for student scholarship funds at Guilford.

To reserve your license plate (no money is required now), download an application from the alumni page of the college's Web site, www.guilford.edu/alumni, or contact **Caroline Steed '90** by calling 336-316-2321 or e-mailing csteed@guilford.edu.

Yarbrough and Steed Appointed to Alumni Relations Positions

Jonna A. Yarbrough and **Caroline B. Steed '90** were appointed to the positions of assistant director of alumni relations and assistant to the director of alumni relations, respectively, in June.

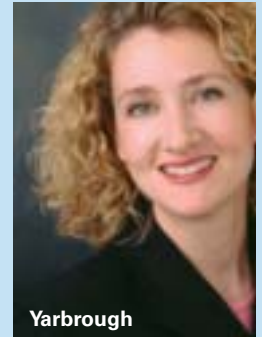
Yarbrough focuses on building relationships with the college's alumni and improving levels of participation while Steed focuses on the maintenance of alumni records and contact.

"Jonna has a wealth of event management experience and brings a very high level of related knowledge to our office as we design and implement homecoming and other events for our alumni," said **Jerry Harrelson '72**, director of alumni relations. "Caroline has excellent communication and computer skills, and both are enthusiastic and excited about being at Guilford."

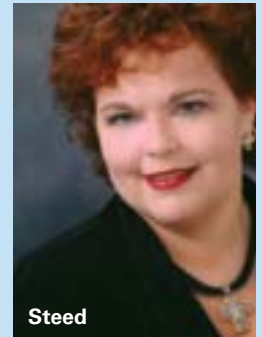
Yarbrough worked with numerous national corporations as an independent planner in 2002-03. She was an operations manager with USA Hosts in New Orleans, La., from 2000-02, planning and implementing events, tours and ground services.

A 1997 graduate of Meredith College in Raleigh, N.C., Yarbrough earned a bachelor of arts degree in speech communications. She is certified by the Certified Meeting Professional Program.

Steed was a customer relations representative with Exclusive Furniture Development in Greensboro from 1999-02. She earned a bachelor of science in justice and policy studies as a student in the Center for Continuing Education.

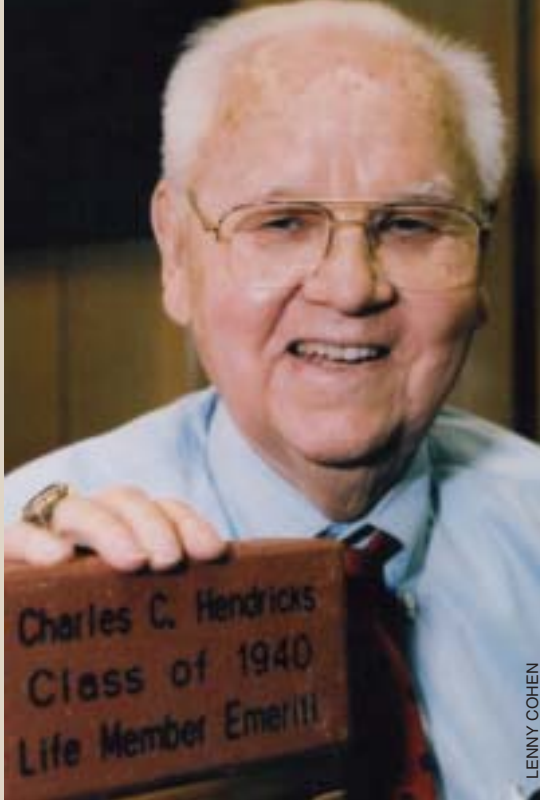


Yarbrough



Steed

Charlie Hendricks '40



LENNY COHEN

Bricks for Graduate Walk Available Through Alumni Office

Guilford is planning to pave the walk between Duke Memorial and King halls with engraved bricks that are available for purchase by alumni.

Each brick costs \$100 and includes a graduate's name and class year. A brick is a perfect holiday, birthday or anniversary gift. The goal is to direct any profits from sales of bricks to a dedicated program to enhance and maintain campus walkways.

To reserve a brick for the graduate walk, contact **Caroline Steed '90** by calling 336-316-2321 or e-mailing csteed@guilford.edu.