

# Community Newsletter

Career and Community Learning

Nov. 5–Nov. 10  
2008

Got a question about your  
resume or cover letter?  
Life after graduation worries?  
Ask Lisa Tell!

What do you do with a BA in English?  
Hear from professionals in the field &  
find out how to apply for a Dorothy Lloyd  
Gilbert Award!

## COUNSELOR IS IN!

Lunch-4pm

Wednesdays, Starting Nov.5

Founders Lobby

## Career Options for English Majors

6-7pm, Nov. 12th

Walnut Room (room in the Dining Hall)



### Updates/Upcoming Events:

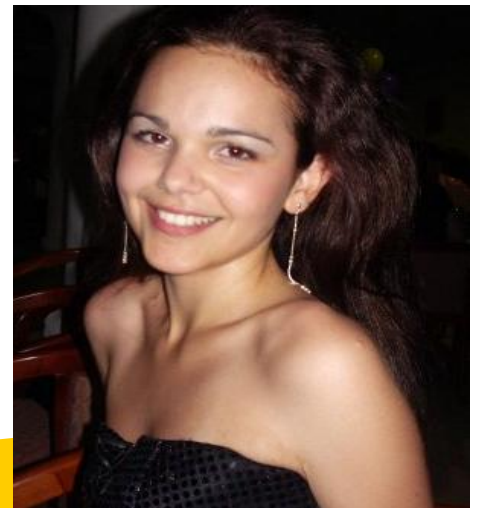
1. Nov. 5th **FREE HIV  
Testing & Community Work  
Day** 1-3pm

2. **Homecoming/ Family  
Weekend** Nov. 7-9

3. Nov. 10th & 11th **Walk-in  
Resume Day** in Career &  
Community Learning

4. Nov. 14th **Blood Drive** ~  
Volunteers Needed 10-  
2:30p Contact Desirée  
Wilkinson for more info

*Happy Birthday  
Neliana!  
(Oct. 31st)*  
Project Community  
Volunteer



## National Alzheimer's Disease Month

President Ronald Reagan designated November as National Alzheimer's Disease Awareness Month in 1983. National Alzheimer's Disease Awareness month raises awareness of Alzheimer's disease and to shed light on the importance of finding breakthroughs in diagnosis, prevention, treatments and, eventually, a cure.

# Service/Volunteer Opportunities & Trainings

## Smith High School:

They are seeking to expand their tutorial program. They are looking to recruit as many tutor/mentors as possible. Contact Francine Scott at 336-294-7300 or via email at [scottf@gcsnc.com](mailto:scottf@gcsnc.com) if you are interested.

## Warnersville Recreation Center :

Students who want to volunteer to tutor kids after school. Kids range from ages 5-12yr old; Mon-Fri 2-6pm. Contact Melvin Melton at 336-373-5871 or at [Melvin.melton@greensboro-nc.gov](mailto:Melvin.melton@greensboro-nc.gov) .

## Literacy Trainings

Writing: Nov. 12th in the

MRC, with Andrea Robertson and Nancy Yoder.

Mathematics: Nov 19th in King 126 with Geri Cochran

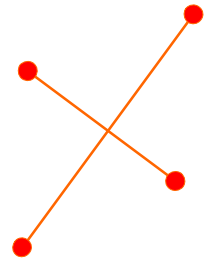
## America Reads:

Tutors needed for Reedy Fork Elementary to work with their students. Contact Paula Harrison, Curriculum Facilitator for Reedy Fork Elementary School, at 336-656-3723 ext. 130.

## ~ Senior Corner ~

### Evaluating Graduate Programs:

- What are the admissions requirements?
- What specializations are available?
- Will the school provide you with networking opportunities?
- What is the reputation & ranking of the school? Is it accredited?
- What are the tuition & fees?
- How successful are the graduates of the program?



Layout Design & Editor:

*Yasmin Casado*

Editor in Chief:

*Desirée Wilkinson*